

KINO LUMBARDHI

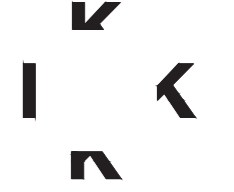
PRIZREN, KOSOVO

client



LUMBARDHI FOUNDATION
Sahat Kulla 24
20000 Prizren Kosovo

architects



KHORA OFFICE
Kemeraltı Cad. 15/3
Karaköy İstanbul 34425 Turkey

structural engineers

ARTON DAUTAJ

conservation consultant

PARALEL 41 ARCHITECTS
Burçin ALTINSAY ÖZGÜNER
Dubaracı Sokak No 22-1
Arnavutköy İstanbul Turkey

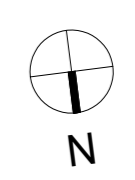
mep engineer

CEGG ENGINEERING
7650 SE 27th Street Unit 403,
Mercer Island, WA 98040 USA

lighting consultant

fire safety consultant

no.	date	revisions



PROGRESS PRINT
SCHEMATIC DESIGN

date JUN 4 2019 drawn by GÇ

scale 1:50

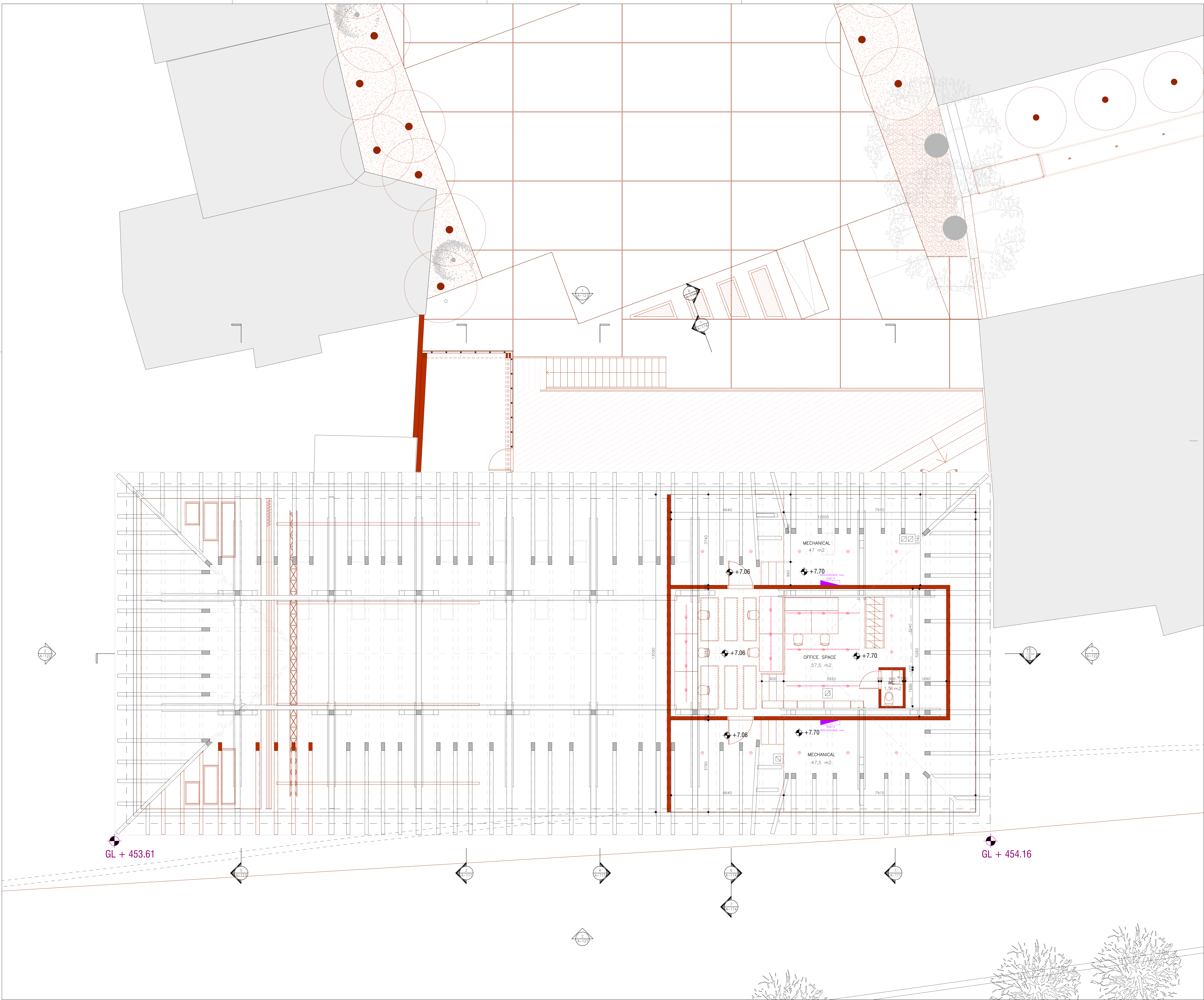
project no. 1701-KL

drawing title

ROOF SPACE FLOOR PLAN

drawing no.

A-103



KINO LUMBARDHI

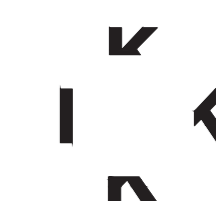
PRIZREN, KOSOVO

client



LUMBARDHI FOUNDATION
Sahat Kulla 24
20000 Prizren Kosovo

architects



KHORA OFFICE
Kemeraltı Cad. 15/3
Karaköy İstanbul 34425 Turkey

structural engineers

ARTON DAUTAJ

conservation consultant

PARALEL 41 ARCHITECTS
Burçin ALTINSAY ÖZGÜNER
Dubaracı Sokak No 22-1
Arnavutköy İstanbul Turkey

mep engineer

CeGG ENGINEERING
7650 SE 27th Street Unit 403,
Mercer Island, WA 98040 USA

lighting consultant

fire safety consultant

no.	date	revisions



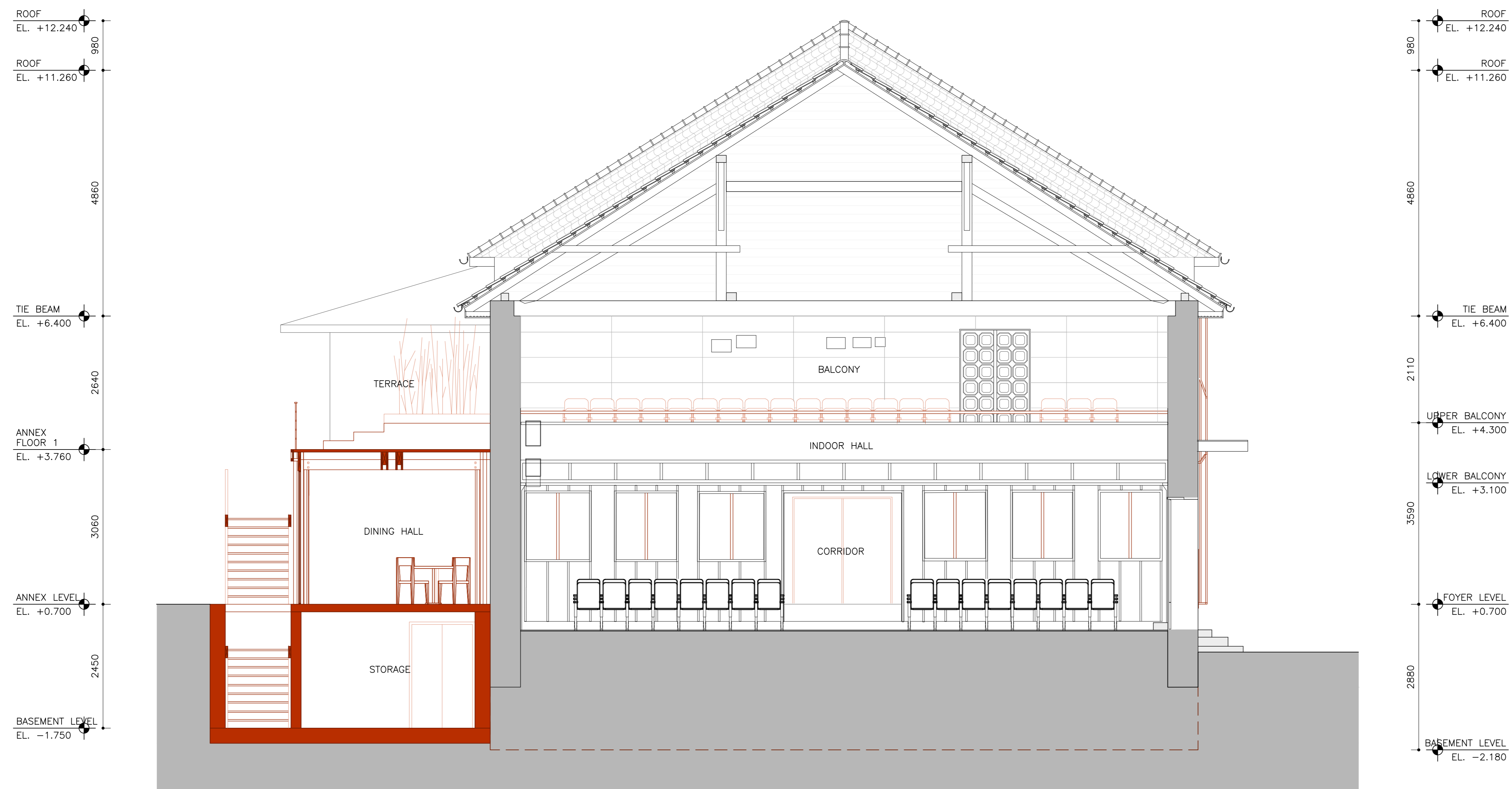
PROGRESS PRINT
SCHEMATIC DESIGN

date	drawn by
JUN 4 2019	gç
scale	
1:50	
project no.	
1701-KL	
drawing title	

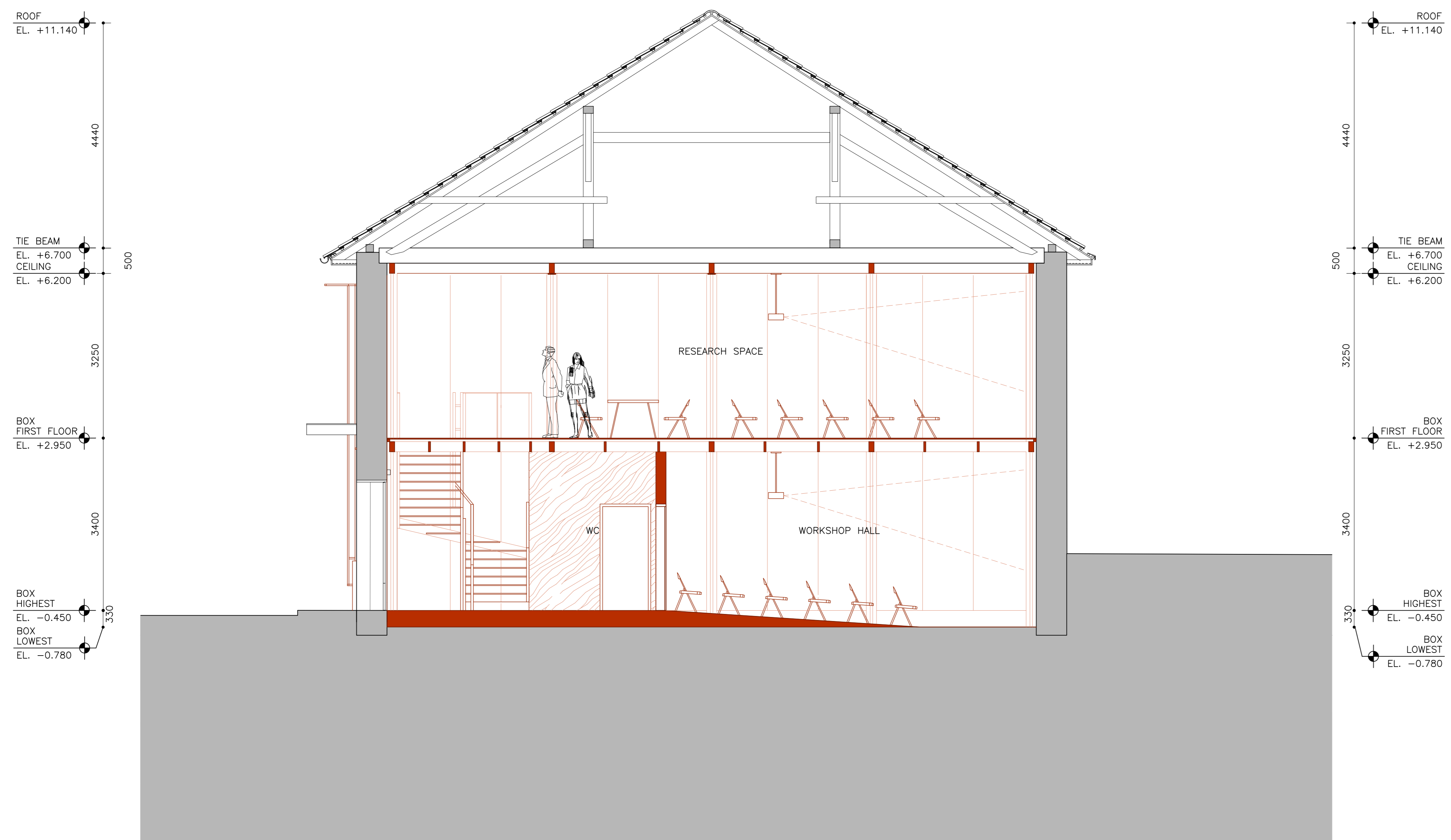
SECTION 4-4
SECTION 5-5

drawing no.

A-113



1 SECTION 4-4



2 SECTION 5-5

